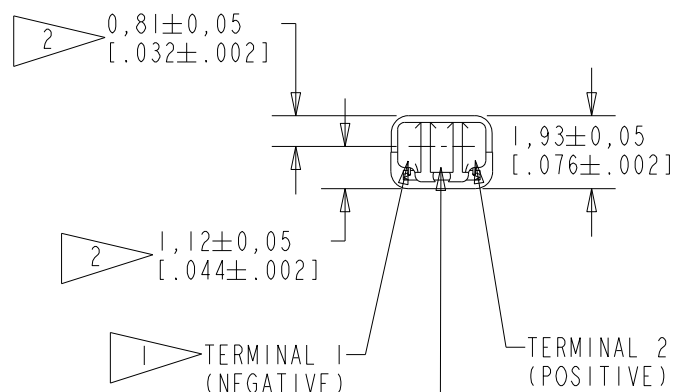
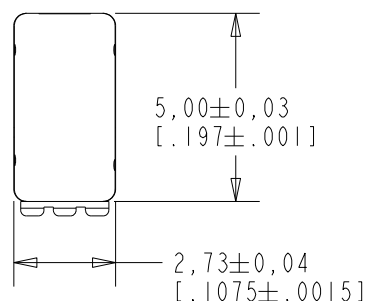


FK-30018-000

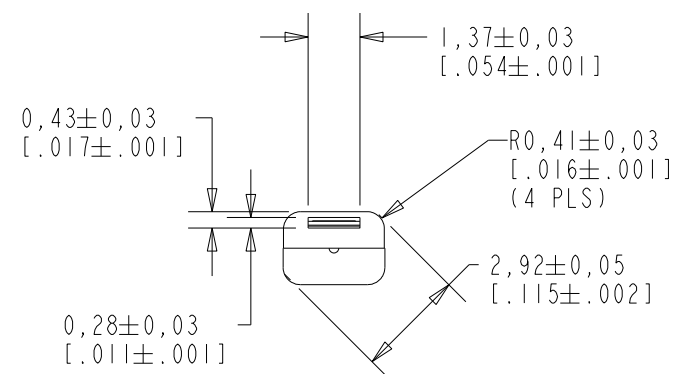
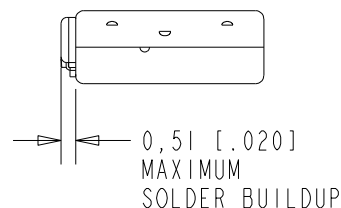
SHT 1.1

## NOTES:

- 1 A POSITIVE GOING VOLTAGE AT TERMINAL 2, RELATIVE TO TERMINAL 1, CAUSES A DECREASE IN PRESSURE AT THE SOUND OUTLET.
- 2 LOCATED FROM TWO SURFACES FOR CUSTOMER CONVENIENCE. ONLY APPLICABLE FROM ONE SURFACE, NOT TO BE USED TOGETHER.



UNUSED TERMINAL, RUBBER SEAL  
REMOVED FOR BACK VENT  
AFTER FINAL TEST



SCALE 2:1  
NOMINAL DIMENSIONS IN MILLIMETERS [INCHES]  
WEIGHT .11 GRAMS

# KNOWLES CORPORATION

Revision	C.O. #	Implementation Date	RELEASE LEVEL	REVISION
E	PI0000118	3-15-16	Active	E
D	CI0111744	10-20-10		
SCALE: 5:1			DR. BY AB	DATE 6-7-06
DO NOT SCALE DRAWING			CK. BY GJP	DATE 6-8-06
TITLE: RECEIVER		FK-30018-000		APP. BY GJP
OUTLINE DRAWING		SHT 1.1		DATE 6-8-06

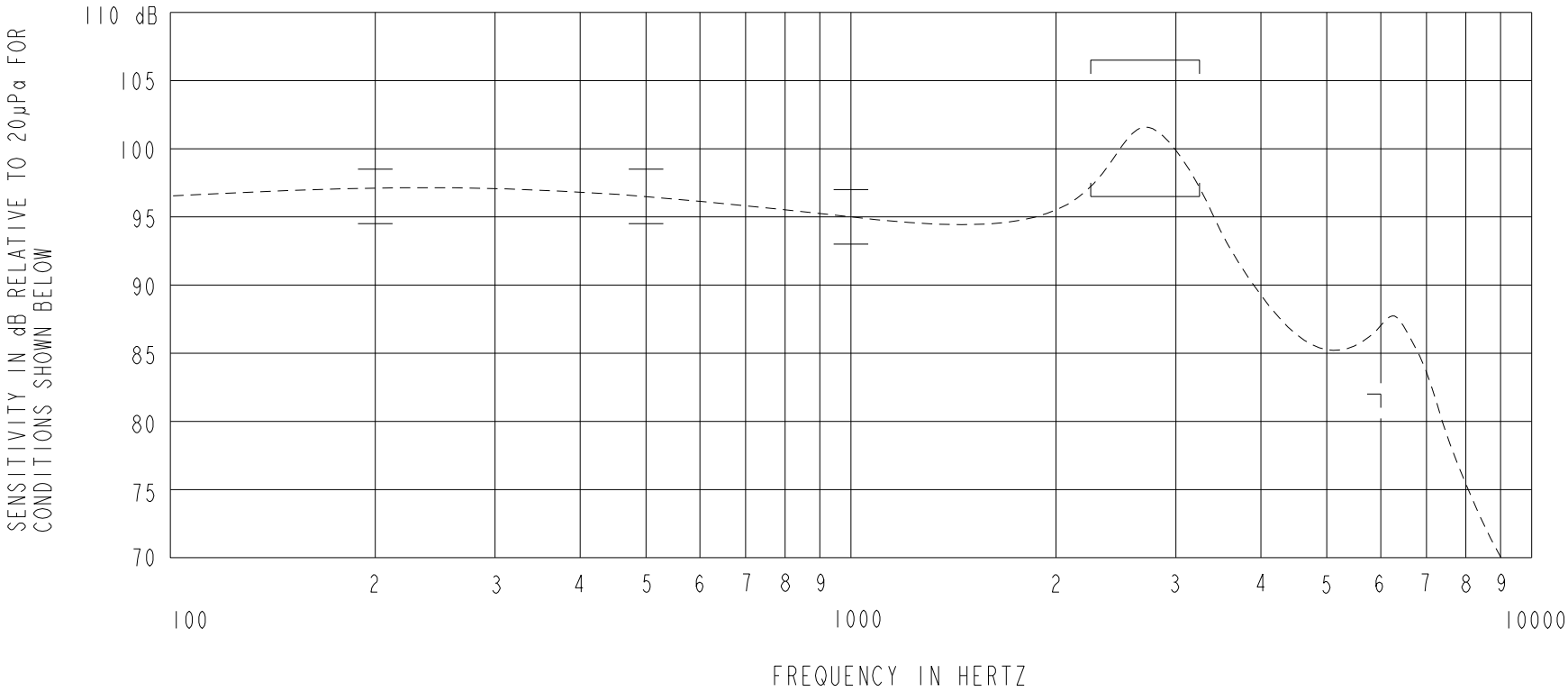
AN UNDAMPED AND TUBELESS MAGNETIC BALANCED ARMATURE RECEIVER  
INTENDED FOR USE IN CIC HEARING INSTRUMENTS OR AS THE LOW  
FREQUENCY DRIVER IN A HIFI SYSTEM. EXTERNAL BACK VENT IS  
PROVIDED ON THE CENTER PAD OF TERMINAL.

NO DAMPING

FK-30018-000  
SHEET 2.1

NOTE: SPECIFICATIONS FOLLOWED BY AN ASTERISK (\*) ARE 100% TESTED.

CONSTANT VOLTAGE DRIVE CONDITIONS (WITH BACK VENT SEALED)



ACOUSTICAL

SENSITIVITY\*  
DEVICE WILL PRODUCE THE SPL LISTED BELOW UNDER TEST CONDITIONS DESCRIBED IN TABLE 3.  
NOMINAL SENSITIVITY AT 1kHz IS dB RELATIVE TO 20μPa. ALL OTHER VALUES  
IN dB RELATIVE TO THE SENSITIVITY AT 1kHz.

FREQUENCY (Hz)	MINIMUM	NOMINAL	MAXIMUM
200	-0.5	+1.5	+3.5
500	-0.5	+1.5	+3.5
1000	-2.0	95.0	+2.0
2250 - 3250	+3.5	+6.5	+9.5
6000	-13.0	---	---

TABLE 1

TOTAL HARMONIC DISTORTION\*  
DEVICE WILL NOT EXCEED TOTAL HARMONIC DISTORTION LEVELS LISTED BELOW.

FREQUENCY (Hz)	AC DRIVE (V rms)	DC BIAS (V)	LIMIT (%)
920	.085	0	5
1380	.085	0	5
920	.240	0	10

TABLE 2

TEST CONDITIONS

NOMINAL SOURCE VOLTAGE	.085 V rms, 0 mA DC BIAS
SOURCE IMPEDANCE	<1 Ohm
TUBING	10mm [.394"] LONG, 1mm [.039"] I.D.
COUPLER CAVITY	2 CM <sup>3</sup> , SIMULATED ANSI S3.7 TYPE HA-3 (IEC 60318-5)

TABLE 3

ELECTRICAL

DC RESISTANCE	25.0 Ohms ± 10%
IMPEDANCE @ 500 Hz	32.0 Ohms ± 15%
IMPEDANCE @ 1kHz	38.5 Ohms ± 15%

TABLE 4

ISOLATION: CASE WILL BE ELECTRICALLY ISOLATED FROM THE COIL CIRCUIT.\*

MECHANICAL

PORT LOCATION: I2N

SOLDER TYPE: SAC305  
TEMPERATURE:  
OPERATING: SENSITIVITY WILL NOT VARY  
MORE THAN +1/-3 dB FROM  
-17°C TO 63°C  
STORAGE: -40°C TO 63°C

Revision	C.O. #	Implementation Date	RELEASE LEVEL	REVISION
E	PI0000118	3-15-16	Active	E
D	CI0111744	10-20-10		
WHEN TEST LIMITS ARE USED TO ESTABLISH INCOMING INSPECTION ACCEPTANCE/REJECTION CRITERIA, CORRELATION OF TEST EQUIPMENT WITH KNOWLES IS ALSO REQUIRED FOR ELIMINATION OF EQUIPMENT AND TEST METHOD VARIATION			DR. BY AB	DATE 6-7-06
TITLE: RECEIVER			CK. BY GJP	DATE 6-8-06
PERFORMANCE SPECIFICATION			APP. BY GJP	DATE 6-8-06
FK-30018-000			SHT 2.1	

KNOWLES CORPORATION